



Chapter 5  
High Voltage Cable  
Accessories & Insulators



## High Voltage Torque Controlled Connectors and Lugs

### FEATURES

- Fast and safe installation
- Excellent electrical performance
- Excellent mechanical performance
- Easy installation with socket wrench
- Pre-engineered design for perfect fit
- Cu and Al conductors
- Body made of aluminum alloy
- Variety of different palms available
- Lug body made of tinned aluminum alloy

### APPLICATIONS

- Suitable for up to 1600 mm<sup>2</sup>
- Straight and size transition type connectors

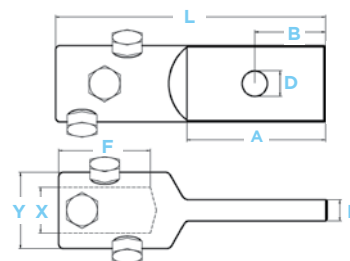
### BENEFITS

- ♦ The connector design allows cables to be spliced/terminated without special tools, heat treatment or filing after installation.
- ♦ Shearhead bolts ensure a pre-engineered electrical connection.
- ♦ The shearhead bolts break off at a predetermined level below the outer surface of the connector, at a defined torque. This ensures the correct contact pressure is reached every time. Oxide-breaking and corrosion prevention is performed by the contact grease inside the body.

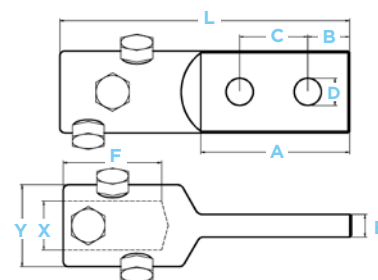


### PRODUCT SELECTION INFORMATION: DIMENSIONS IN INCHES (MM)

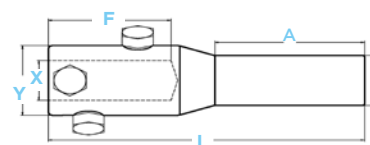
Cable Lug with 1-hole Palm NEMA Pad (EPPA-071-x/y)	
L	6.54 (166.2)
A	3 (76.2)
B	1.5 (38.1)
D	.56 (14.2)
E	.98 (25)
F	2.68 (68)
X = Conductor Diameter, Y = Insulation Diameter	



Cable Lug with 2-Hole Palm NEMA Pad (EPPA-072-x/y)	
L	6.54 (166.2)
A	3 (76.2)
B	.63 (15.9)
C	1.75 (44.5)
D	.56 (14.2)
E	.98 (25)
F	2.68 (68)
X = Conductor Diameter, Y = Insulation Diameter	



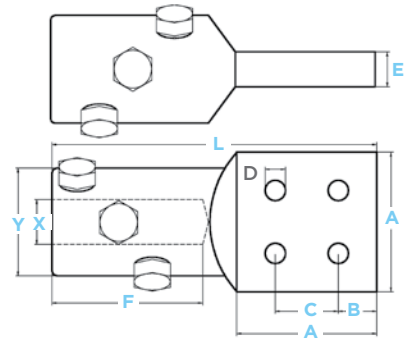
Cable Lug with Rod	
<b>ROD ø 30 mm (EPPA-050-X/Y)</b>	
L	7.48 (190)
A	3.94 (100)
F	2.52 (64)
ø	1.18 (30)
<b>ROD ø 40 mm (EPPA-053-X/Y)</b>	
L	10.39 (264)
A	4.92 (125)
F	4.02 (102)
ø	1.57 (40)
<b>ROD ø 50 mm (EPPA-061-X/Y)</b>	
L	10.39 (264)
A	4.92 (125)
F	4.19 (106.5)
ø	1.97 (50)
X = Conductor Diameter, Y = Insulation Diameter	



**PRODUCT SELECTION INFORMATION: DIMENSIONS IN INCHES (MM)**

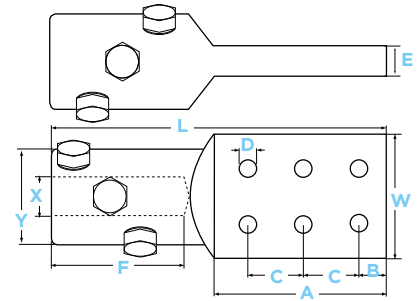
**TB1**

<b>Cable Lug with 4-Hole Palm NEMA Pad (EPPA-054-X/Y)</b>	
<b>Contact plate: EPPA-054-X/Y</b>	
<b>4 in. x 4 in. (101.6 mm x 101.6 mm)</b>	
L	9.2 in. (234 mm)
A	4 in. (101.6 mm)
B	1.13 in. (28.6 mm)
E	.98 in. (25 mm)
C	1.75 in. (44.5 mm)
D	.56 in. (14.3 mm)
F	4.53 in. (115 mm)
X, Y according to the cable dimensions	



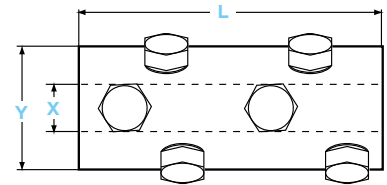
**TB2**

<b>Cable Lug with 6-Hole Palm NEMA Pad (EPPA-076-X/Y)</b>	
<b>Contact plate: 4 in. x 6 in. (101.6 mm x 152.4 mm)</b>	
L	11.2 in. (285 mm)
W	4 in. (101.6 mm)
B	1.25 in. (31.8 mm)
E	.98 in. (25 mm)
C	1.75 in. (44.5 mm)
D	.56 in. (14.3 mm)
F	4.53 in. (115 mm)
A	6 in. (152.4 mm)
X, Y according to the cable dimensions	



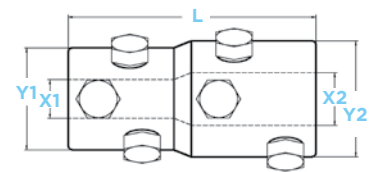
**TB3**

<b>Mechanical Connector for Straight Connection (EPPA-047-X/Y-L)</b>	
L	5.12 in. (130 mm)
L	7.09 in. (180 mm)
L	L = 9.06 in. (230 mm)
X, Y according to the cable dimensions	



**TB4**

<b>Mechanical Connector for Size Transition (EPPA-047-X1/Y1-X2/Y2-L)</b>	
L	5.12 in. (130 mm)
L	7.09 in. (180 mm)
X1, X2 = Conductor Diameter Y1, Y2 = Insulation Diameter	



**TB5**

<b>Mechanical Connector for Cables with Small Insulation Thickness (EPPA-063-X1/Y1-X2/Y2-L)</b>	
L	7.09 in (180 mm)
L	9.06 in (230 mm)
X1, X2 = Conductor Diameter Y1, Y2 = Insulation Diameter	

